

RARC Remote-controlled Station Tips

Bruce MacAlister, W4BRU

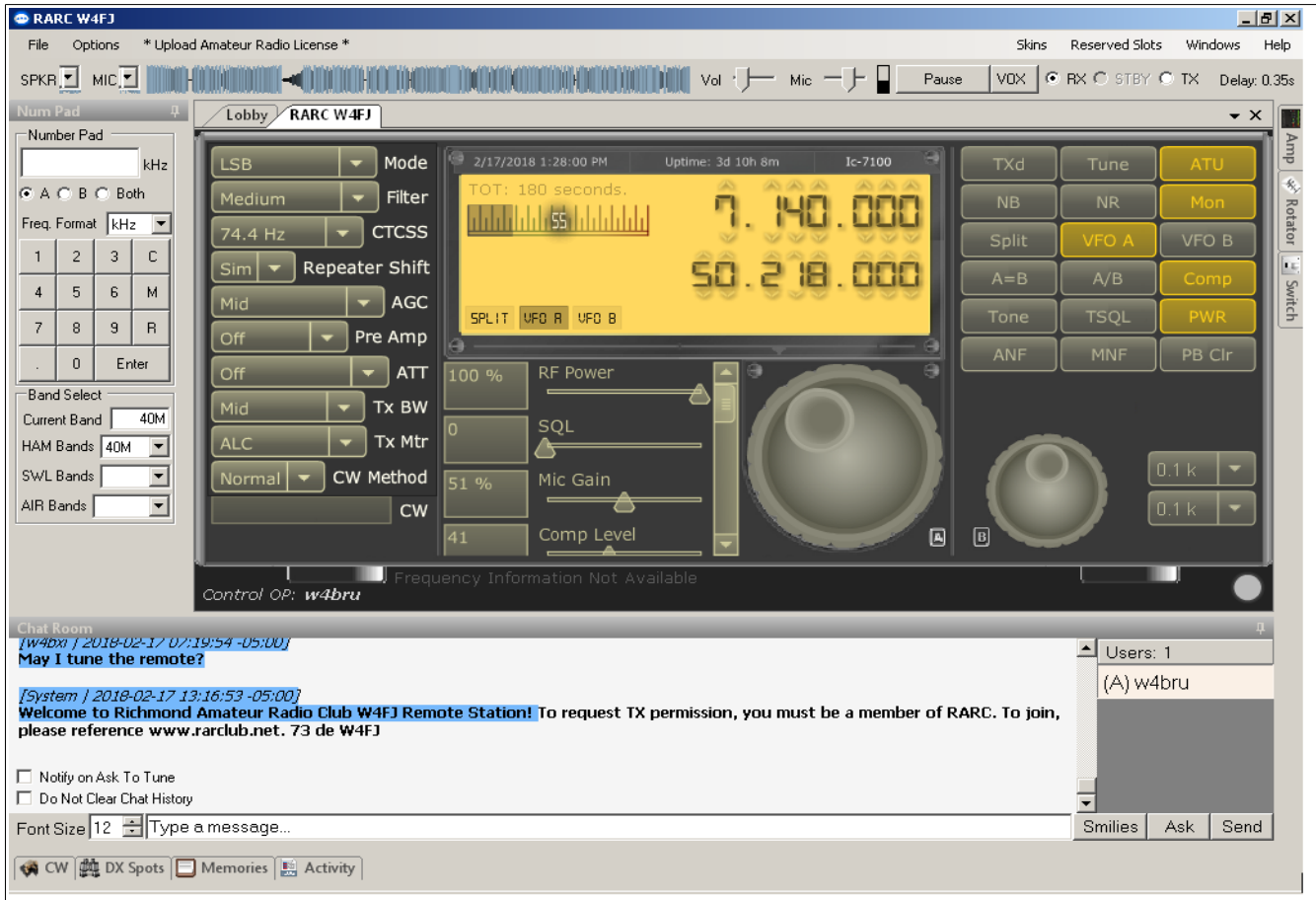
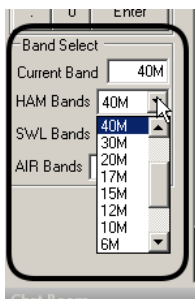
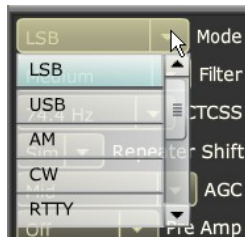


Figure 1: W4FJ RARC Remote Station on a Windows computer set to 40-meters

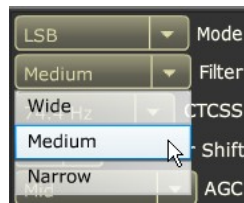
Setting up band, modes, etc.



Picking the band



Set mode



Pick Medium filter for SSB, Narrow for CW & digital



Set Squelch to 0 for HF, Mic Gain at the center

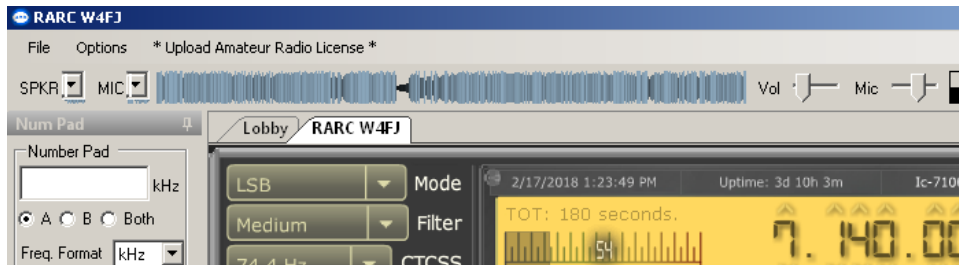
Tuning



Click the Tune button. The frequency will briefly turn red.

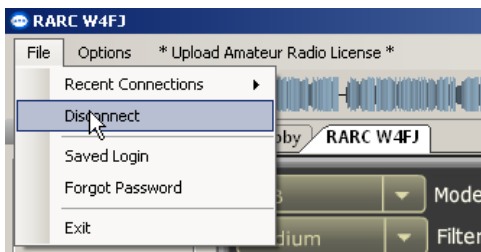
Use the up-down arrows (top) to tune. Put the mouse pointer on the big knob (bottom) and use the mouse wheel to tune.

Adjust speaker and microphone volume



Adjust the Vol slider for listening. Adjust Mic by transmitting and setting so the audio spectrum display is just edging into the red when speaking loudly.

Disconnecting



Disconnect from the RARC radio and let others use it